

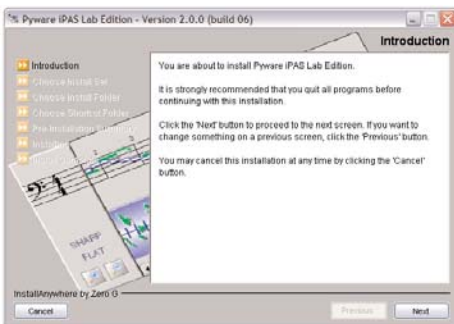
Quick Start Guide

Installation

- Insert the iPAS CD into the drive.
- For Windows computers, open the Windows folder on the CD, and double-click on the Install icon.

For Macintosh computers, open the Macintosh folder on the CD, and double-click on the Install icon.

- After a few moments, the installer will display.



The screen may differ slightly depending on the type of installer you are running. Click **Next** to continue.

- *If you are installing the standard student iPAS edition or an iPAS Demonstration, skip this step. If this installation is an iPAS Lab installer the **Choose Install Set** window will display.*



If this screen is not showing, skip this step.

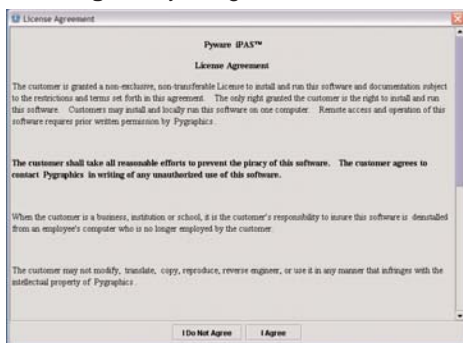
There are two types of installation set to choose from:

Teacher Computer Installation or **Lab Computer Installation**. The **Teacher Computer Installation** configures iPAS to work with the iPAS Teacher Software included with the

iPAS Teacher Edition CD. Both the **Teacher Computer Installation** or **Lab Computer Installation** have different log on procedure than the standard iPAS program to prevent Student ID's and Passwords from being accessible through the log on profiles.

First Time Operation


- The first time the iPAS program is started, a **License Agreement** will display as shown. Read the agreement and click **I Agree** if you agree, otherwise click **I Do Not Agree**.



- After agreeing to the license, the main iPAS screen will display as shown. Click **Continue** to proceed.



- The first time the iPAS program is run a registration screen will appear as shown. Enter the requested information and click **eMail My Registration**.



The screenshot shows the 'iPAS Registration' window within the 'Pyware iPAS - Student Edition' application. The window has a blue header with the 'iPAS' logo. On the left, there is a 'Skip For Now' button. The main area is a light gray box containing the title 'iPAS Registration' and a registration form. The form includes fields for Name, Address, City, State, ZIP, Phone, and eMail Address. A checkbox is checked, indicating 'It is okay to email update information and special offers.' At the bottom of the form are three buttons: 'eMail My Registration' (highlighted), 'Register Later', and 'Never Register'.

- After the registration is sent, the update screen will display. It is recommended to you check for updates in order to benefit from any new features that may have been released since your installer was made. To check for updates, click **Yes**.



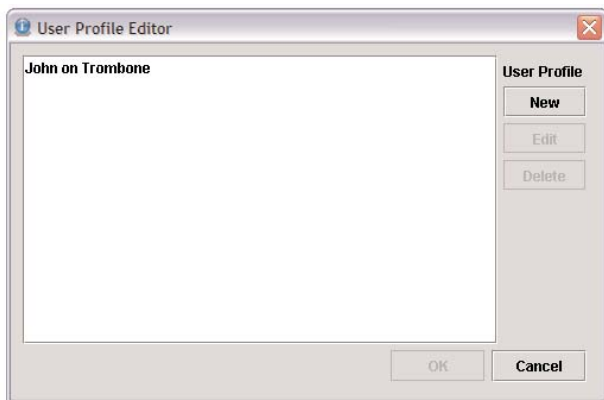
The screenshot shows the 'iPAS Update' window within the 'Pyware iPAS - Student Edition' application. The window has a blue header with the 'iPAS' logo. On the left, there is a 'Skip For Now' button. The main area is a light gray box containing the text 'Do you want to check online for free iPAS updates.' in red. Below this text is a large oval button labeled 'Yes!'. Underneath the button is the text 'Click above to search online for any available up...'. At the bottom are two buttons: 'Ask again in 14 days.' and 'Don't Ask Anymore'.

- After checking for updates, you will be asked to create your profile by entering your name and your instrument and email address. Enter the information and click **OK**.



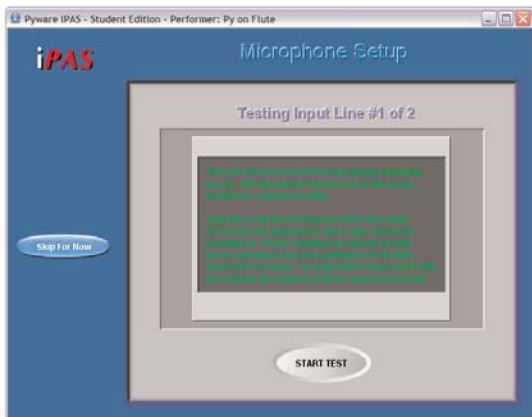
A dialog box titled "Enter your name and information." with a close button (X) in the top right corner. It contains three input fields: "Your Name:" with a text box, "Instrument:" with a dropdown menu showing "Flute", and "EMail Address:" with a text box. Below the email field is the text "Your email address is not required." At the bottom are "OK" and "Cancel" buttons.

- The **Profile Editor** will display with your name added to the list. You can add other names now or **OK** to continue.

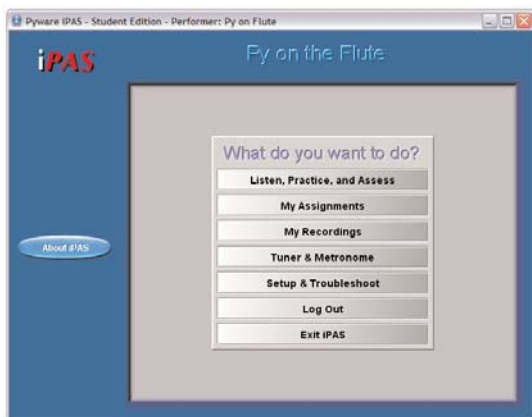


A window titled "User Profile Editor" with a close button (X) in the top right corner. It features a large list box on the left containing the text "John on Trombone". To the right of the list box is a vertical stack of buttons: "New", "Edit", and "Delete". At the bottom right are "OK" and "Cancel" buttons.

- The final stage of the first time operation of iPAS is microphone and speaker testing. Follow the prompts and you will be ready to use iPAS.

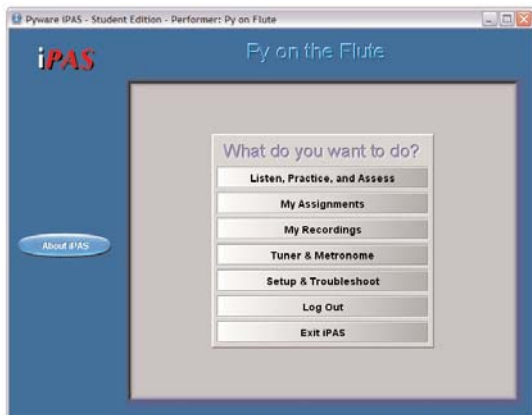


- After the microphone and speaker tests, the main menu will display.



iPAS Main Menu

The iPAS main menu is the starting point of all functions in iPAS.



Listen, Practice and Assess

Start any lesson installed on your iPAS program.

My Assignments

View, manage, print and perform the assignments assigned by your teacher. Download new assignments from your teacher through the Online School Account. Upload your assignment grades, recordings, and graphs to your teachers computer. Print the grades of your assignments. See up to date Top 10 List of students who have performed any of the assignments. *This menu item is not functional in the demonstration version.*

My Recordings

Hear, email and save your recordings with their graphs.

Tuner & Metronome

Display a tuner and metronome.

Setup & Troubleshoot

Setup your program preferences. Run microphone and speaker tests. Check for updates.

Log Out

Log out the current performer so another performer can log in.

Exit iPAS

Exit the program.